



Promat



# PYROSEC<sup>®</sup> SLIMLITE

## FIRE RATED DOORS & SCREENS

# DESIGN BENEFITS AND PRODUCT TRACEABILITY

## The leading reference in passive fire protection

Promat is a leading global manufacturer of passive fire protection solutions with a heritage spanning over 50 years, therefore a Promat solution is guaranteed to provide maximum assurance and peace of mind.

### Promat PYROSEC Fire Door 360 degree Wheel of Assurance

To prevent product substitution and poor installation, Promat UK introduced the 360° Wheel of Assurance for PYROSEC® Fire Doors.

Promat's technical experts provide guidance on the right approach at the design and specification stage. The doors are supplied directly by Promat and fitted by a network of approved installers to increase supply chain traceability. The doors are inspected upon completion to ensure it has been installed in accordance with Promat recommendations and a certificate of conformity is provided.

#### 360° Wheel of Assurance for Promat SYSTEMGLAS®



#### FIRE RESISTANCE



EI30 (integrity and insulation) and EI60 fire ratings available

#### FULLY TESTED SOLUTION



A fully tested and certified system.

#### MAXIMUM AESTHETIC APPEAL



Large clear glazing in combination with lightweight framing.

#### ADDITIONAL DOOR OPTIONS



A variety of optional fittings to meet a variety of project requirements.

#### LARGE SIZES AVAILABLE



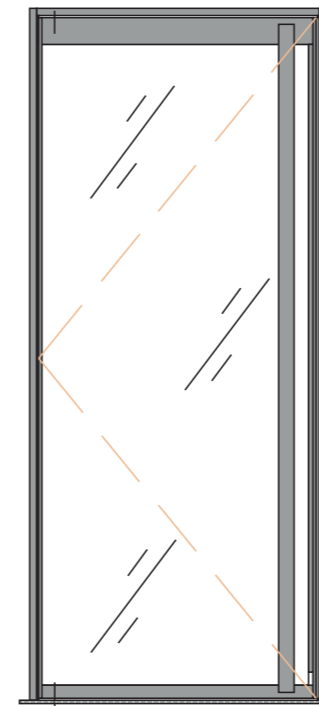
PYROSEC® Doors are tested to large sizes.

#### SUPPLY CHAIN TRACEABILITY



Promat doors and systems provide reassurance and traceability..

# SLIMLITE DOOR STANDARD SPECIFICATION



#### Standard Specification:

- Superslim 20mm frame members, 25mm stiles and 90mm rails for minimal framing and maximum glass area.
- Full Height back to back handle
- Available in stainless steel, any standard RAL colour and PVD finishes.
- Unlatched
- Floor spring closer with either single or double action

#### Options

- Available in single, double or half leaf doorsets
- Full compliment of side screens that allow for clear butt joint glazing
- Various ironmongery options include deadlocks in top and bottom rails, concealed electric latch and surface mounted mag locks (see page 9 for more options)
- Optional smoke seals

#### How to use this guide

The maximum sizes shown are per door leaf area (m<sup>2</sup>) within the width and height parameters shown. To check the door leaf is within test evidence for a single door deduct 38mm from the structural opening width and for a double door deduct 41mm. From the structural opening height, deduct 34mm for either a single or double door.

For example:

Structural opening width (single door):  
1050mm less 38mm = door leaf width 1012mm

Structural opening height (single door):  
2200mm less 34mm = door leaf height 2166mm

Door leaf area:  
1012mm X 2166mm = 2.19m<sup>2</sup> (max for EI60 is 2.55m<sup>2</sup>)

#### Clear openings

Clear openings at 90deg are calculated by deducting 160mm from the door leaf width.

Example:

1012mm - 160mm = 852mm clear opening.

Clear opening can be further increased by:

Handle on one side only (push plate on the other). Add 77mm.

Document M (DDA) stipulates clear openings should be minimum 750mm (refurbishment) and 800mm (new build).

#### Closing forces

We cannot guarantee or predict opening or closing forces that the doors will have when they are in their installed position, therefore the design team / client may need to consider additional options surrounding the operation of the fire doors. Closing forces can also be influenced by internal wind pressures, air conditioning, heating etc and can result in different opening / closing forces throughout the building.

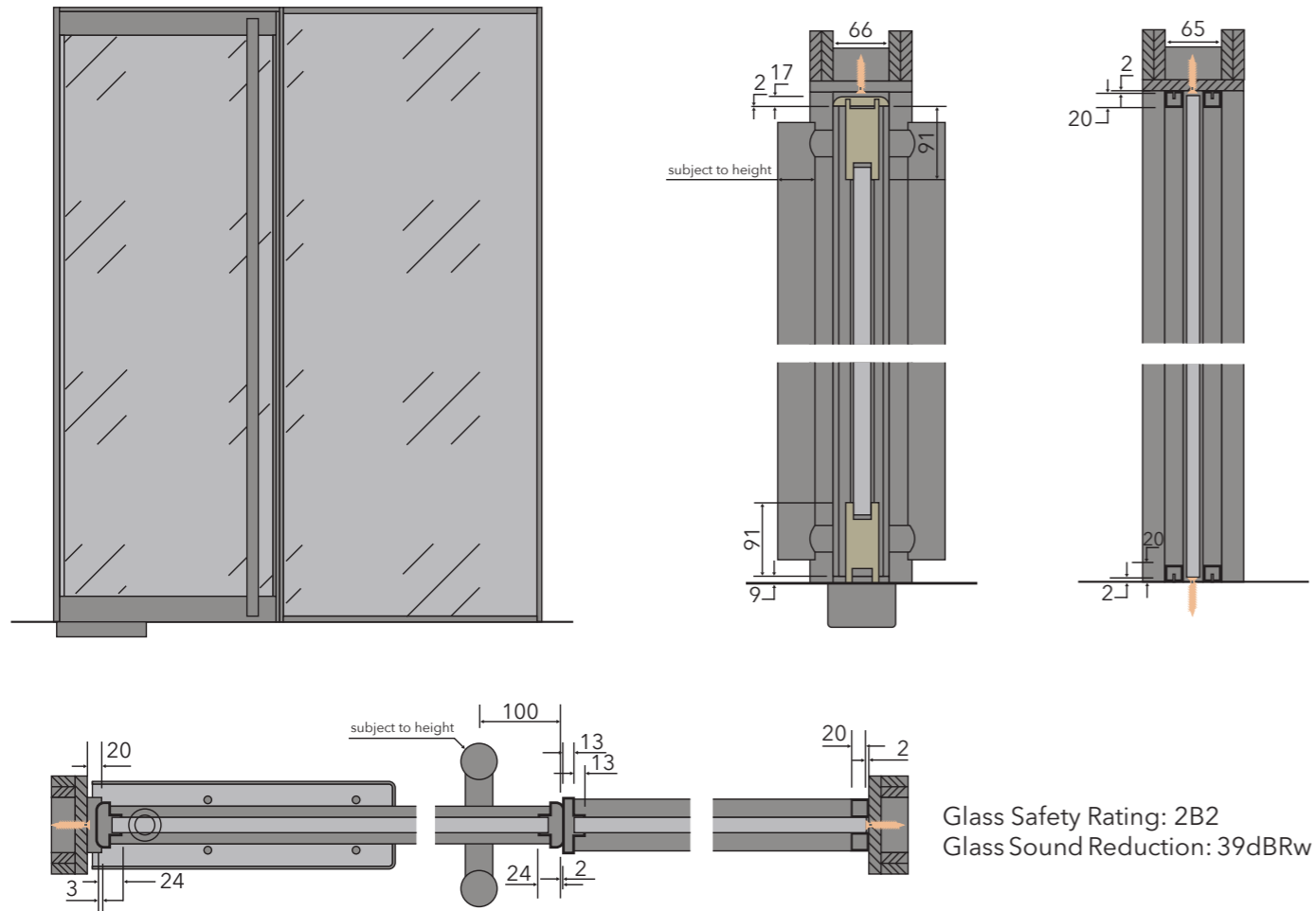
The only option to guarantee opening or closing forces would be door automation. Alternatively, electromagnetic hold open devices can be considered.

Protecting lives and property by reducing fire risk through education and increasing knowledge in the construction industry. Our expert advice, tested products and guidance result in safer solutions for the built environment.



# SLIMLITE EI30 SINGLE DOOR

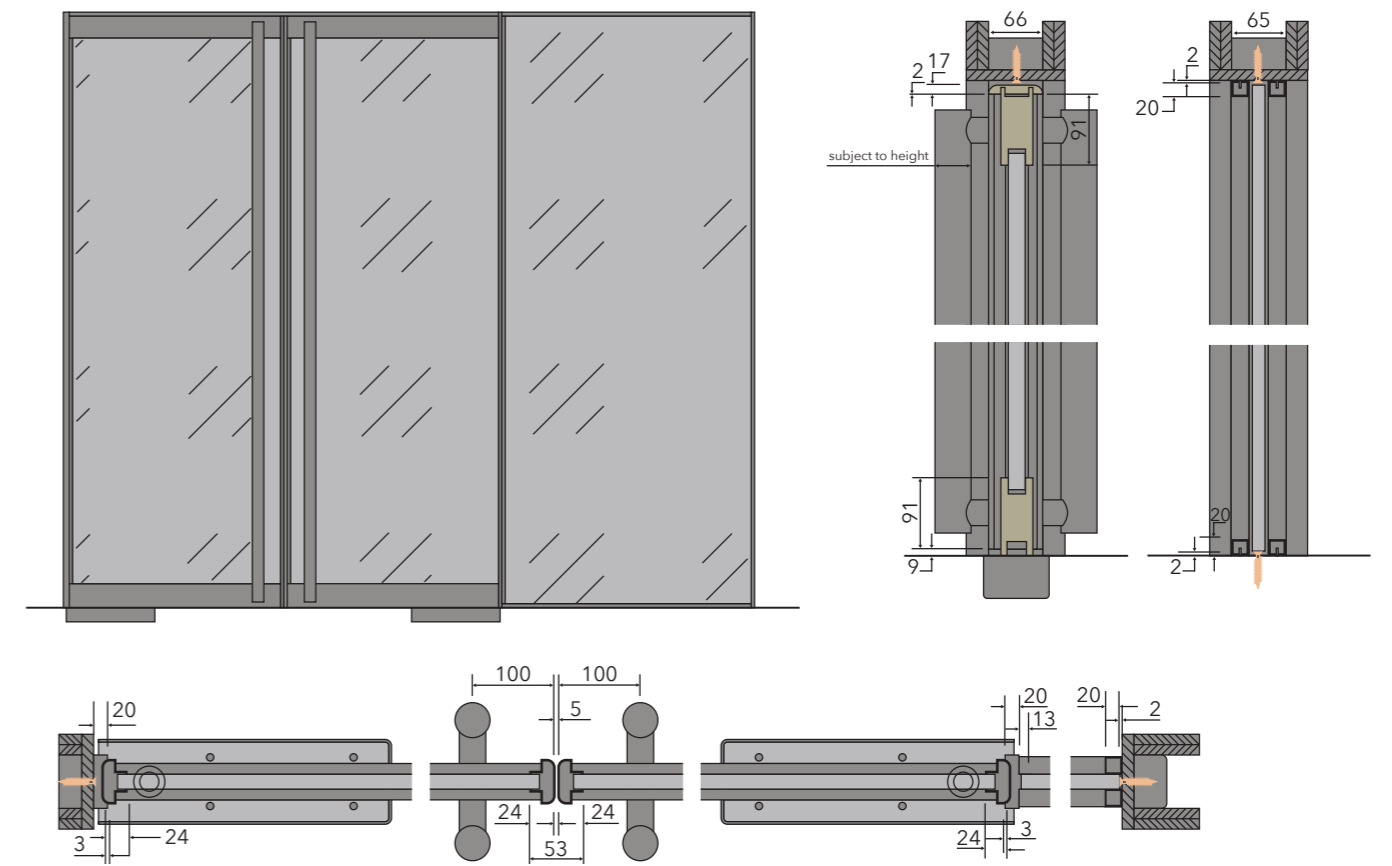
The Slimlite Single EI30 steel framed door provides 30 minute insulation and integrity fire protection. Slimlite is the latest development in our Pyrosec door range. The glass area is maximised using our superslim 20mm frame section. Unlimited butt joint side panels can be added to either side of the door to create a contemporary environment and maximise light transmission.



Glass Safety Rating: 2B2  
Glass Sound Reduction: 39dB<sub>Rw</sub>

# SLIMLITE EI30 DOUBLE DOOR

The Slimlite Double EI30 steel framed door provides up to 30 minutes insulation and integrity fire protection. Slimlite is the latest development in our Pyrosec door range. The glass area is maximised using our superslim 20mm frame section. Unlimited butt joint side panels can be added to either side of the door to create a contemporary environment and maximise light transmission.



Glass Safety Rating: 2B2  
Glass Sound Reduction: 39dB<sub>Rw</sub>

## SLIMLITE DOOR LEAF DIMENSIONS (EI30)

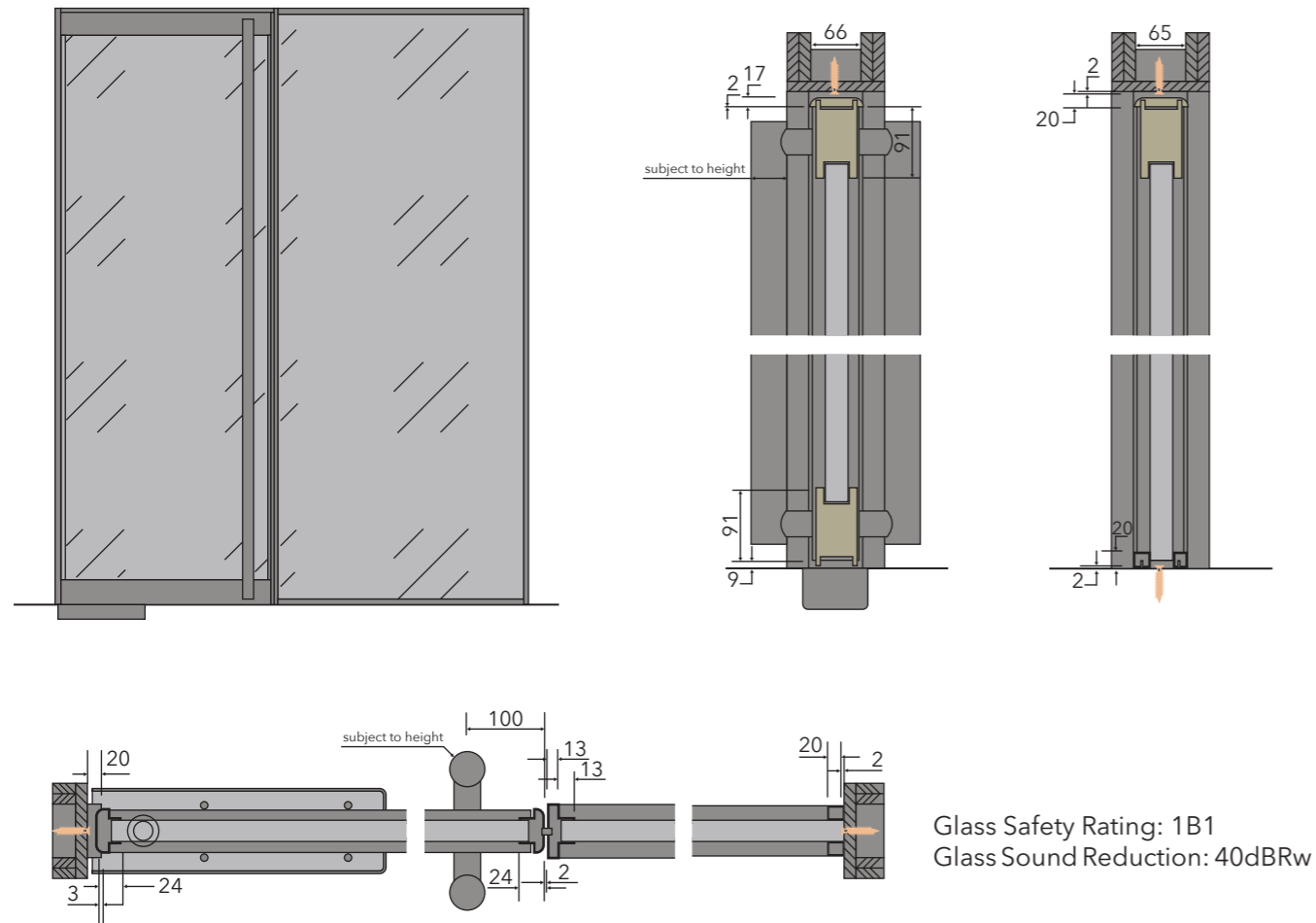
	Maximum Leaf Area		Structural Opening	Clear Opening
	Min	Max		
Width	425mm	1100mm	+ 38mm	Door leaf - 160mm
Height	1800mm	2950mm	+ 34mm	
Side Panels	425mm	unlimited 1000mm modules		

## SLIMLITE DOOR LEAF DIMENSIONS (EI30)

	Maximum Leaf Area		Structural Opening	Clear Opening
	Min	Max		
Width	425mm	1100mm	+ 41mm	Door leaf - 160mm
Height	1800mm	2950mm	+ 34mm	
Side Panels	425mm	unlimited 1000mm modules		

# SLIMLITE EI60 SINGLE DOOR

The Slimlite Single EI60 steel framed door provides up to 60 minute insulation and integrity fire protection. Slimlite is the latest development in our Pyrosec door range. The glass area is maximised using our superslim 20mm frame section. Unlimited butt joint side panels can be added to either side of the door to create a contemporary environment and maximise light transmission.

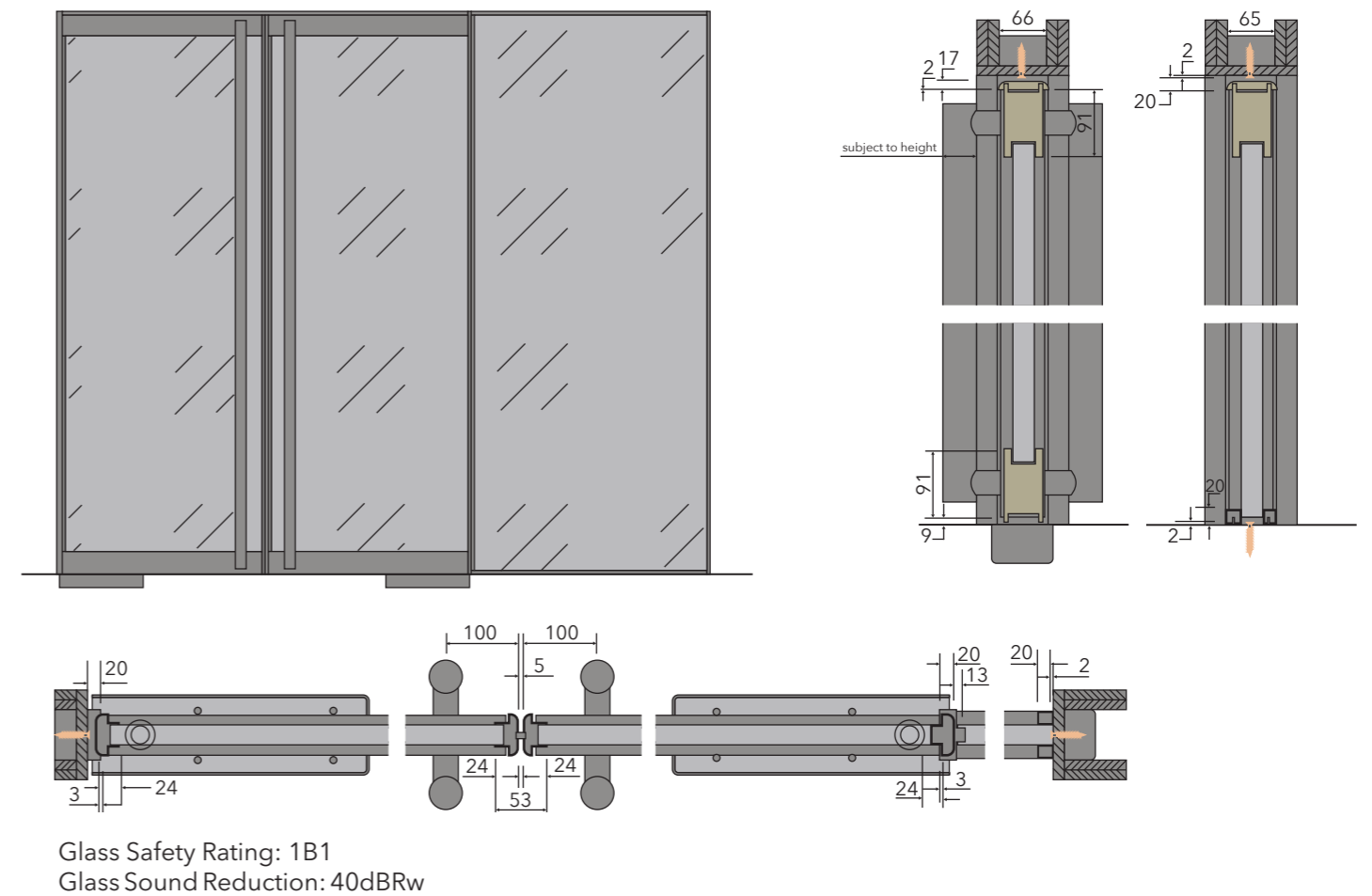


## SLIMLITE DOOR LEAF DIMENSIONS (EI60)

Maximum Leaf Area	2.55 m <sup>2</sup>		Structural Opening	Clear Opening
	Min	Max		
Width	425mm	1020mm	+ 38mm	Door leaf - 160mm
Height	1800mm	2880mm	+ 34mm	
Side Panels	425mm	unlimited 1000mm modules		

# SLIMLITE EI60 DOUBLE DOOR

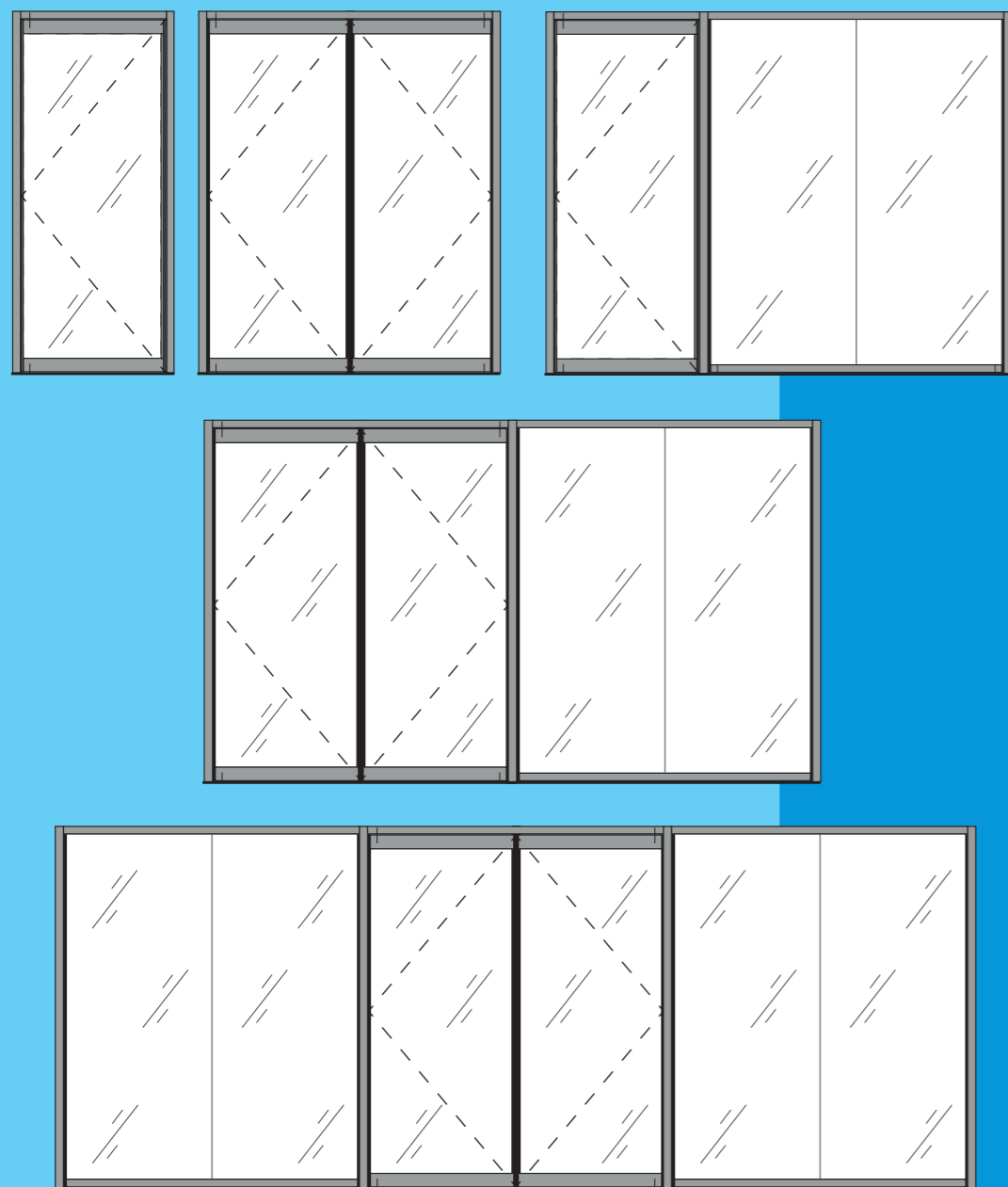
The Slimlite Double EI60 steel framed door provides up to 60 minutes insulation and integrity fire protection. Slimlite is the latest development in our Pyrosec door range. The glass area is maximised using our superslim 20mm frame section. Unlimited butt joint side panels can be added to either side of the door to create a contemporary environment and maximise light transmission.



## SLIMLITE DOOR LEAF DIMENSIONS (EI60)

Maximum Leaf Area	2.55 m <sup>2</sup>		Structural Opening	Clear Opening
	Min	Max		
Width	425mm	1020mm	+ 41mm	Door leaf - 160mm
Height	1800mm	2880mm	+ 34mm	
Side Panels	425mm	unlimited 1000mm modules		

# DOOR & SCREEN CONFIGURATIONS



# ADDITIONAL DOOR OPTIONS

There is a variety of additional options and configurations available with the PYROSEC® range of fire doors to improve safety, client convenience or aesthetics or for specific project requirements. This includes magnets, locks, glazing bars, overhead closers and a choice of finishes.

## High Security Electronic Locking System

The electronic side load lock is a motor driven electronic lock to secure the doors in a variety of environments. It has the ability to pull the PYROSEC® Doors in tightly against a stop and will release instantly when requested, even with excessive load on the door. The lock maintains a high level of security with automatic deadbolting, 1,000 kg holding force and a 10mm thick stainless steel bolt pin. The specification is 3E Security SA66 (for single action doors) and DA66 (for double action doors).

## Surface Mount Magnet

Surface mount magnets secure and provide access controls for PYROSEC® Doors. The magnet has a discrete exterior finish and the specification is 3E Security Series 550.

## Glazing Bar

Vertical and horizontal Georgian glazing bars are available with PYROSEC® Doors, side panels and over panels for aesthetic appeal. Available in stainless steel or PPC, they are available in 16mm, 19mm and 25.4mm thicknesses.

## Handle Options

Standard 'T' full height handles are supplied as standard. The diameter is 38mm (for door heights up to 2090mm), 45mm (for door heights up to 2690mm) and 50mm for doors over 2690mm high. Mitred and 'D' type handles are also available.

## Corner Posts

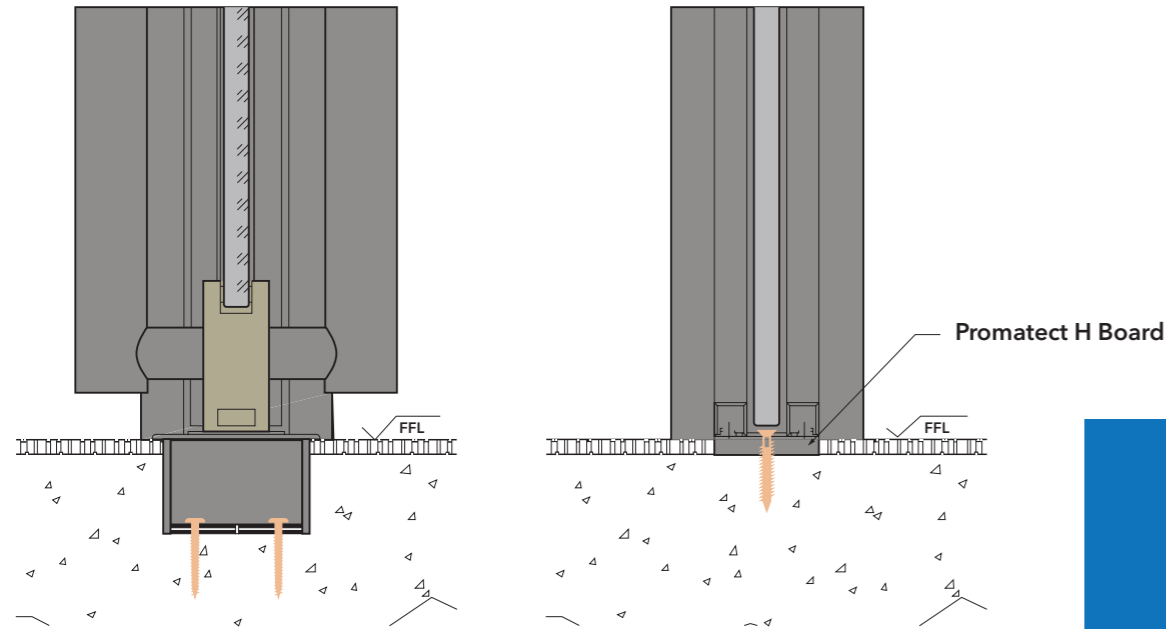
Available for 90 degree returns.



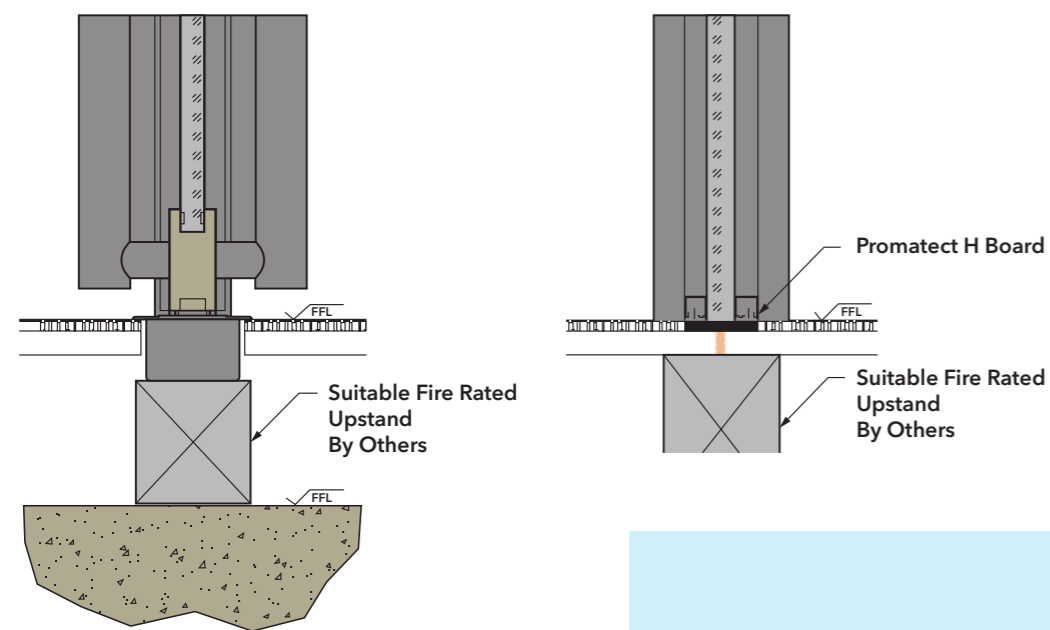
Due to the slim frame, deflection heads, overhead panels and underfloor transom supports are not available for the SLIMLITE door range. Please refer to our Pyrosec Specifiers Guide for additional Promat solutions for these options.

# EXAMPLE INSTALLATION CONDITIONS

## Installation Conditions: Direct Fix



## Installation Conditions: Raised Access Floor



# COMPLIANCE AND SUSTAINABILITY

## Compliance



The fire resistant performance of Pyrosec Slimlite doors and screens are tested in accordance with BS476: Part 22:1987, BS EN 1634 doors & screens and BS EN 1364 partitions with doors.

To ensure performance they are only sold through a network of trained approved installers. Training is a one day course comprising a half day classroom theory session followed by practical door training. On completion each installer receives a unique installer number.



Our installers complete check lists for every project and these are stored on a central database for maximum traceability. To find out more or apply to be an Approved Installer please email:

[promatglass@etexgroup.com](mailto:promatglass@etexgroup.com)

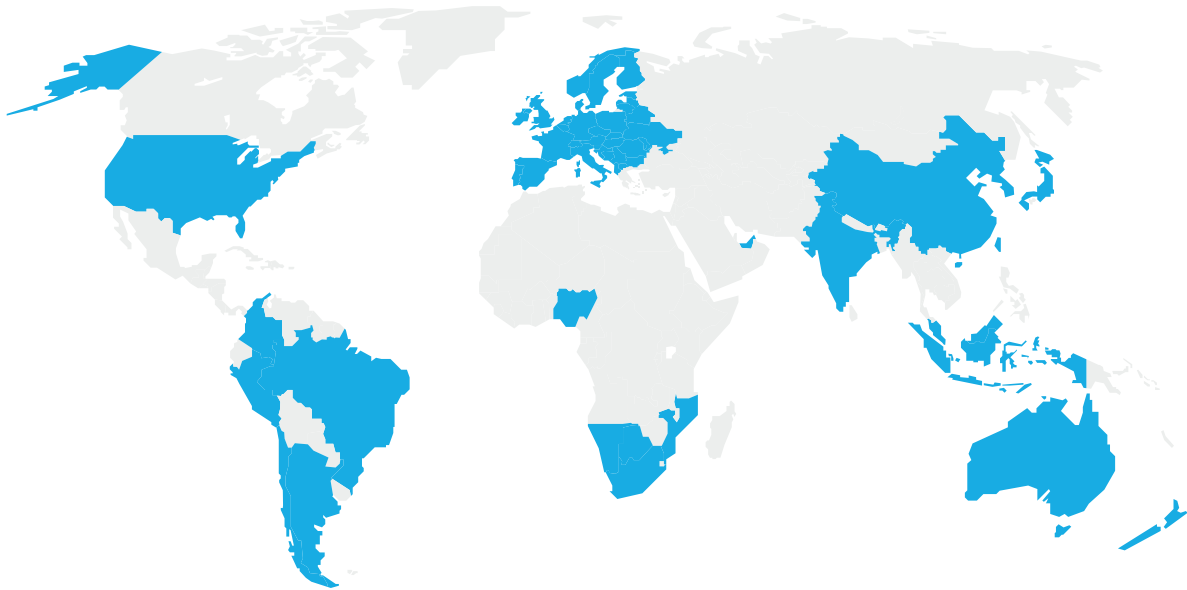
## Sustainability

Promat is committed to reducing the environmental footprint of its manufacturing processes as well as reducing the impact of our customers.

Through more convenient packaging, more sustainable energy sources and involvement in life cycle assessments and sustainable certification programmes, Promat is focused on sustainable products for a safer, greener world where we inspire ways of living.

Promat is part of the Etex Group, which in 2020 became a signatory of the United Nation's Global Compact and the 17 Sustainable Development Goals. Key to Etex's strategy was driving sustainability in the way we develop business.





## Benefit from 60 years of experience

Promat is the leading reference and pioneer in the fields of fire, thermal, and acoustic protection. With a strong global presence and 60 years of experience, innovation and know-how, Promat UK is the first choice for fire rated doors and glazing systems.

## Global sales & technical support

Promat has more than 1,300 employees spread over 13 factories, 40 sales offices and 2 innovation centres worldwide. The company is part of Etex Industry, a division of the Belgian industrial group Etex, specialised in the manufacture and supply of construction materials.

## Sales offices and production facilities

Australia, Austria, Belgium, Brazil, Bulgaria, China, Chile, Colombia, Czech Republic, Denmark, France, Germany, Hong Kong, Hungary, India, Ireland, Italy, Japan, Kazakhstan, Lithuania, Malaysia, The Netherlands, Peru, Poland, Romania, Serbia, Singapore, Slovakia, South Africa, Slovenia, South Korea, Spain, Switzerland, UAE, Ukraine, UK, USA.

### Promat UK Limited

B1 Heywood Distribution Park, Pilsworth Road,  
Heywood, Lancashire, OL10 2TS

T: 0800 588 4444

E: [promatglass@etexgroup.com](mailto:promatglass@etexgroup.com)

[promat.com/industry](http://promat.com/industry)