



PROMARINE[®]-640T



Product description

PROMARINE[®]-640T is a non-combustible auto-claved calcium silicate board, formulated without asbestos and formaldehyde, with excellent fire performance.

Properties

- smooth and consistent surface finish
- suitable for bonding with high pressure laminates
- easy to work, cut and fix
- moisture resistant

Technical data					
Colour	Off-white				
Surface conditions	Smooth, sanded				
Nominal density (tolerance) (EN 12467)	kg/m ³	640 (±10%)			
Reaction to fire	Non-combustible Certificate Number: 164.109/1121/WCL MED 476TE				
Class divisions		A0 Bulkhead	B0 Bulkhead	B15 Bulkhead	B15 Bulkhead
Panel thickness	mm	12.7	12.7	19	12.7+12.7 with 48 mm air gap
Panels joint ¹⁾		Solid spline	Solid spline	Solid spline, "C" spline or Omega joint	Omega joint
Thermal conductivity 20 °C (hot wire method)	W/mK	0.194			
Alkalinity	pH	7-10			
Coefficient of expansion α	m/mK	3·10 ⁻⁶			
Moisture movement	%	< 0.1 (ambient to saturated)			
Moisture content					
Typical	%	< 5 (at despatch)			
Maximum	%	< 12			
Bending strength (oven dry, EN 12467)	N/mm ²	> 3			
Compressive strength (oven dry, EN 12467)					
1% deformation	N/mm ²	2			
5% deformation	N/mm ²	10			
Quality assurance	N/mm ²	Module D. Certificate WCL MED164.109/1121/0476QA			

¹⁾ See specific drawings on page 2.

Acoustic properties				
Thickness	mm	12.7	19	12.7+12.7
R _w index (ISO 717/1)	dB	29	30 ²⁾	36

²⁾ See ISO 10140/2 curve on page 2.

Dimensions (standard)				
Thickness (tolerance)	mm	9.5 / 12.7 / 15.9 / 19.1 / 22.2 / 25.4 (±0.4, double sanded)		
Width (tolerance)	mm	1220 (±1)		
Length (tolerance)	mm	2440 (±1)		



PROMARINE®-640T

Areas of application

- Ideal for installation and application in the marine market for A, B and C Class divisions.

Workability

PROMARINE®-640T can be cut using normal woodworking tools or by using circular blades. During cutting operations use personal protective equipment (see below).

Handling

PROMARINE®-640T ISO 10140/2 should be worked and installed using appropriate personal protective equipment (PPE). Use protective gloves, glasses, suitable respiratory equipment to avoid health effects, and suit. Use dust

extraction when worked inside. After use, thoroughly wash hands and any other parts that could have been in contact with the material. For further information refer to Safety Information Sheet.

Waste disposal

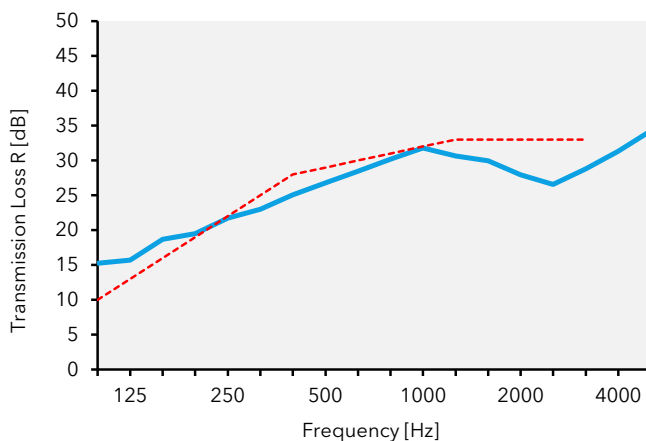
Refer to local legislation. If not available: The board is not classified as a dangerous substance and so no special provisions are required regarding the carriage and disposal of the product to landfill.

Storage

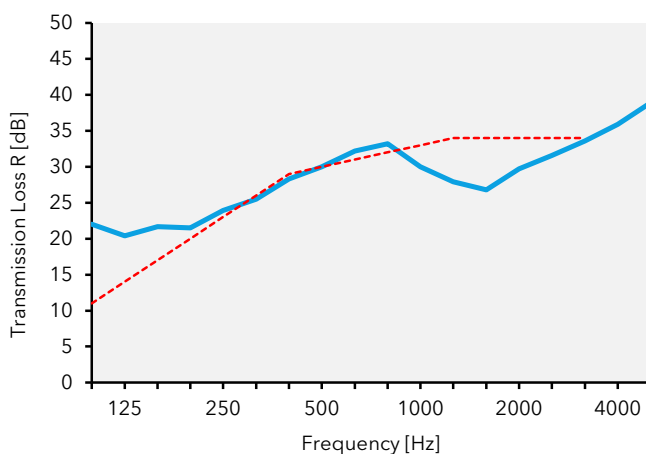
Store on a flat surface, in a dry area.

Acoustic properties

12.7mm, $R_w=29$ [dB]



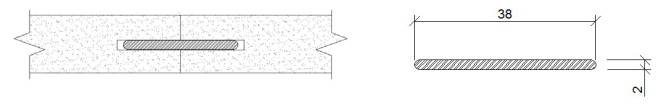
19.0mm, $R_w=30$ [dB]



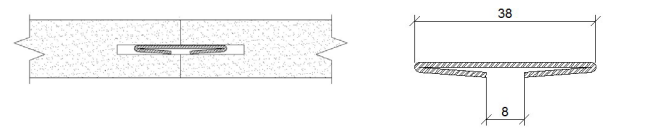
— PROMARINE®-640T ISO 10140/2
 - - - ISO 717 Reference curve

Class divisions - joint drawings

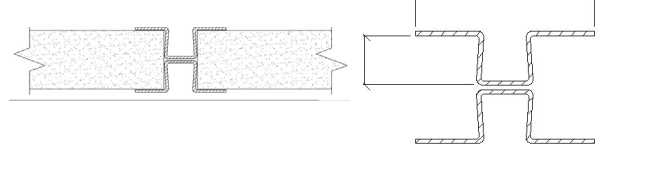
Solid spline



"C" spline



Omega joint



All specified technical data are mean values from the production which are subject to the usual fluctuations and do not represent guaranteed properties in the sense of a guarantee. All information corresponds to the current state of the art and has been presented and described to the best of our knowledge. Changes due to new findings are possible, errors and misprints are not excluded. With regard to any liability, our delivery and payment terms apply exclusively. Request safety datasheet. With the publication of this edition, all previously published datasheets are invalid.
 © Copyright Etex NV, Brussels, Belgium. All rights reserved. 2018-09